



**We are building an international network of students and staff standing up against the impacts of flying and asking our universities to lead by example in travelling consciously**

**'AIR TRAVEL IS OFTEN ONE OF THE LARGEST CONTRIBUTORS TO UNIVERSITIES' CARBON FOOTPRINT.'**

## The problem

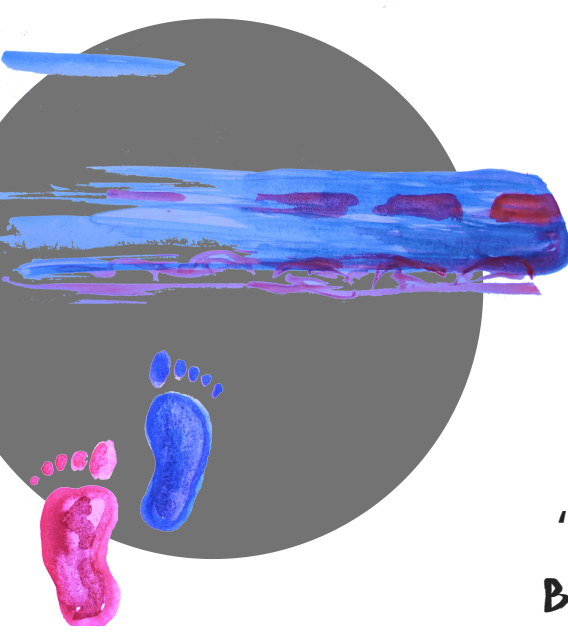
A central component of academic careers and universities' internationalisation strategies is long-distance travel: staff working in higher education and students attending university are still among the frequent flyers of our society. At the same time, it has been widely acknowledged by governments, universities and other institutions that we are in a climate crisis. Even though academic institutions have always been thought of as leaders of society, the environmental burden of extensive travelling is not adequately addressed by the majority of these institutions. Air travel is still often one of the largest contributors to universities' carbon footprint. That is why we believe it's time to address the travel policies of educational institutions!



**'IT'S TIME TO EXPLANE YOUR TRAVEL BEHAVIOUR.'**

## The goal

The goal of ExPlane is not to get universities to be completely flight-free; we recognise that this is not (yet) possible and not fair towards staff and students who can get more value out of their academic career by travelling. However, we want to get rid of unnecessary travel and ensure that all decisions to travel by plane are made consciously and with full awareness of the environmental impacts.



**'EXPLANE'S THEORY OF CHANGE IS THROUGH BOTH INDIVIDUAL AND INSTITUTIONAL CHANGES.'**

## Our long term vision

We imagine our universities to..

- Embrace in-depth, diverse and inclusive collaborations to create high-quality research and projects to push for an inclusive academic community.
- Explore digital communication and collaboration to avoid extensive and unsustainable travel.
- The university strives for accessibility and diversity. Educational opportunities are not determined or affected by factors like ethnicity, gender, disability, social class or income.
- Sustainability is an integral part of all studies and courses. Research is conducted for climate solutions and for communities, not for industries to make a profit.
- The university adopts travel policies that are really climate-friendly.



**Do you want to reduce your university's emissions by addressing air travel?**

**1.**  
**Go to our website**

**2.**  
**Check the ExPlane Toolkit**

**3. Start your ExPlane group**